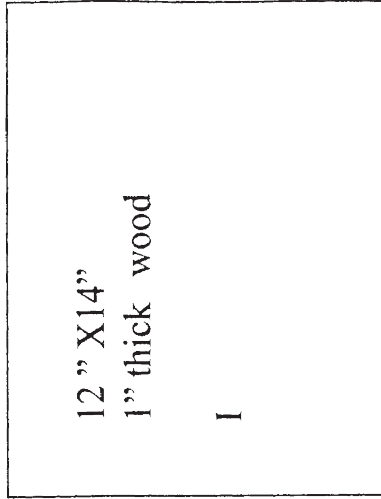
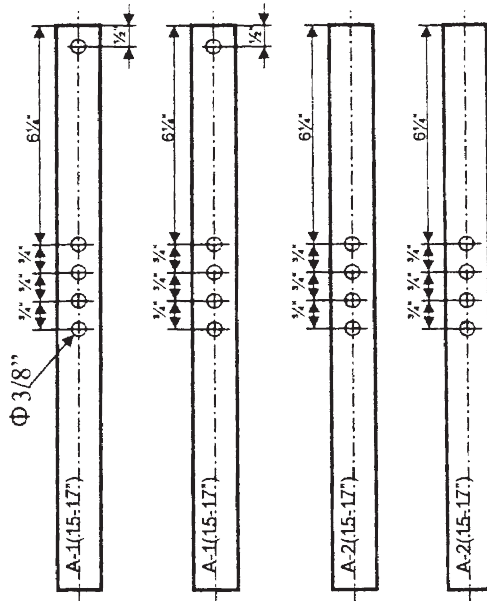


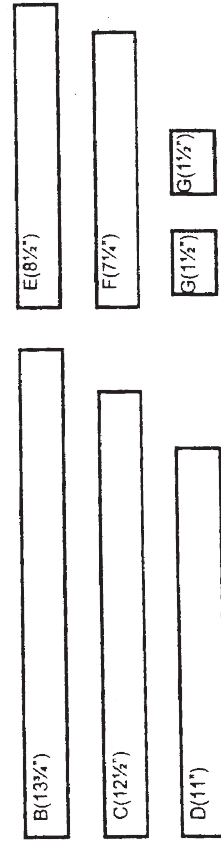
Adjustable height Cello chair

10/22/2000

Cut 1"x2"x8' wood as below.



- 2-Bolt 3/8" x 2-1/2"
- 6-Washer 3/8"
- 4-Nut 3/8"
- 2-L shape Corner Brace 1"
- 2-Hinge 1"
- Wood Screw #6x1-1/4"



Round ϕ 3/8" wood length 11"



Designed by Masaaki Kubota
 Question? Email to
 Kubotam@attglobal.net

